

Index No. T-17

CERTIFICATE OF LOCATION OF GOVERNMENT CORNER

EAST QUARTER Corner of Section 27, Township 107 N, Range 41 W
5th Principal Meridian, State of Minnesota, County of MURRAY

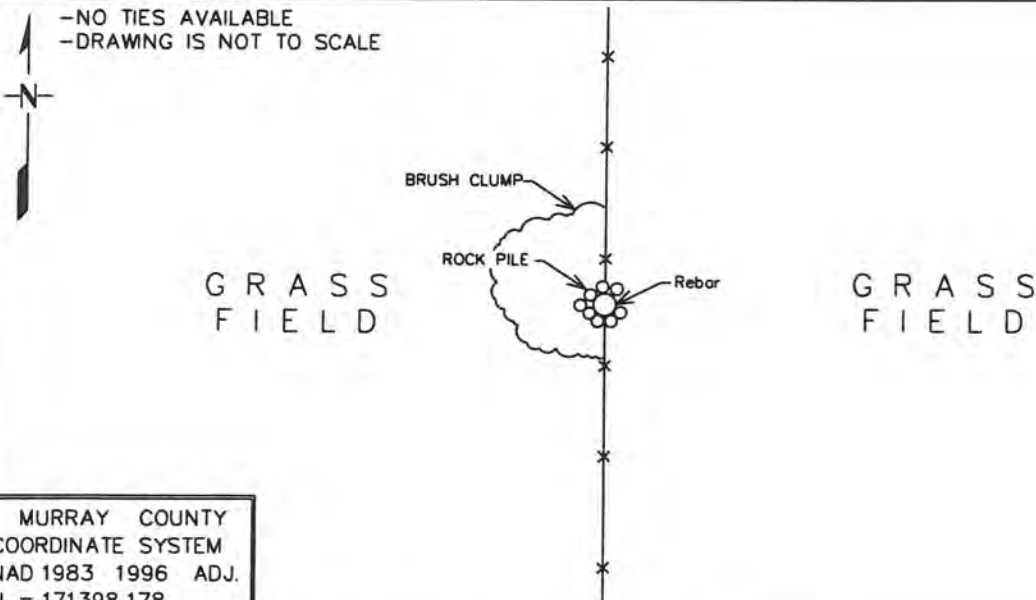
At the corner location shown on the sketch:

On _____ found a _____
DATE

left monument as found, lowered monument, removed monument (explain)

On 4/12/2017 Placed a 3/4" X 24" CAPPED REBAR, STAMPED "MN DNR LS 48249"
DATE
FLUSH, ON N-S FENCE LINE.

-NO TIES AVAILABLE
-DRAWING IS NOT TO SCALE



MURRAY COUNTY
COORDINATE SYSTEM
NAD 1983 1996 ADJ.
N = 171398.178
E = 506119.664

Statement of evidence for this corner location is on back of this page.

6/12/2017
WMA01426.00.00.01

I hereby certify that this plan, specification, or report was prepared by me or under my direct supervision and that I am a duly Licensed Land Surveyor under the laws of the State of Minnesota.

SIGNATURE Daniel A. Drusch DATE 6-16-2017 License Number 48249
DANIEL A. DRUSCH

Title: Land Surveyor Professional Engineer County Surveyor County Engineer

East Quarter Corner Section 27, Township 107 North, Range 41 West, 5th P.M.

The DNR Land Survey Unit contacted the following offices for survey information on this corner:

MN Historical Society
Murray County Recorder and Highway Department

- 1862 The U.S. General Land Office (GLO) field notes, on file with the MN Historical Society, describe this corner as a post in mound with trench pits and a charred stake per instructions.
- 1938 Air photos, on file with the DNR, show the corner area to be near the intersection of occupation lines, north-south and west.
- 1970 The DNR Bureau of Engineering conducted a survey of Beaver Creek WMA. The survey does not show any monument in place for this corner, however a north-south fence is visually depicted at the corner location.
- 1999 The DNR Bureau of Engineering conducted a survey of Beaver Creek WMA. The survey shows a computed lost position for this corner, but no monument was set. The half mile distance between adjoining section corners was 2641.48 according to the survey.
- 2017 April, the DNR Survey Unit conducted a search for this corner, but did not find any original evidence. A north-south fence line exists near the corner location and the fence was found to be on the straight line between adjoining corners. As a result, this corner position was computed by Single Proportionate Measurement between adjoining corners, north and south. This computed position was found to measure:

2640.47 feet (GLO = 2640 ft) from adjoining section corners

Analysis of the available information led the DNR Land Survey Unit to conclude that the computed position marks the location of the corner. Lack of government corner perpetuation bears out the need for the lost position.